

CDS

Basic Pump

Self Priming Centrifugal Pump

Model U4B60S-B

Size 4" x 4"



**PUMP SPECIFICATIONS**

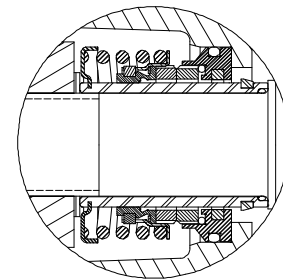
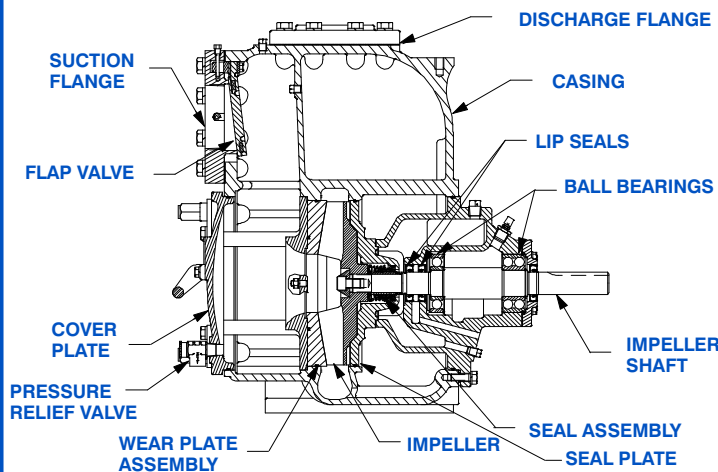
- Size:** 4" x 4" (102 mm x 102 mm) NPT - Female.
- Casing:** Gray Iron 30.  
Maximum Operating Pressure 128 psi (883 kPa).\*
- Semi-Open Type, Six Vane Impeller:** Ductile Iron 60-40-18.  
Handles 1 1/8" (28,6 mm) Diameter Spherical Solids.
- Impeller Shaft:** Alloy Steel 4150.
- Replaceable Wear Plate:** Gray Iron 30.
- Removable Adjustable Cover Plate:** Gray Iron 30; 60 lbs. (27 kg).
- Bearing Housing:** Gray Iron 30.
- Seal Plate:** Gray Iron 30.
- Shaft Sleeve:** Alloy Steel 4130.
- Flap Valve:** Neoprene w/Nylon and Steel Reinforcing.
- Radial Bearing:** Open Single Row Ball.
- Thrust Bearing:** Open Double Row Ball.
- Bearing and Seal Cavity Lubrication:** SAE 30 Non-Detergent Oil.
- Flanges:** 125# Gray Iron 30.
- Gaskets:** Cork, Rubber, Vegetable Fiber, PTFE, Buna-N w/Compressed Synthetic Fibers.
- O-Rings:** Buna-N.
- Hardware:** Standard Plated Steel.
- Brass Pressure Relief Valve.**
- Bearing and Seal Cavity Oil Level Sight Gauges.**



Shown w/Optional Spool Flanges

**Optional Equipment:** Stainless Steel 316 Seal Plate, Wear Plate and Pressure Relief Valve. G-R Hard Iron Impeller, Seal Plate and Wear Plate. Automatic Air Release Valve. 120V/240V Casing Heater. High Pump Temperature Shutdown Kit. Permalon, Kalrez or Fluorocarbon Metal Bellows Seals. Stainless Steel Cartridge Seal.  
Gray Iron 30 Suction and Discharge Spool Flanges:  
4" ASA (Specify Model U4B60S-B /F).  
100 mm DIN 2527 (PN 16) (Specify Model U4B60S-B /FM).

*\*Consult Factory for Applications Exceeding Maximum Pressure and/or Temperature Indicated.*



**SEAL DETAIL**

Cartridge Type, Mechanical, Oil-Lubricated, Double Floating, Self-Aligning. Silicon Carbide Rotating and Stationary Faces. Stainless Steel 316 Stationary Seat. Fluorocarbon Elastomers (DuPont Viton® or Equivalent). Stainless Steel 18-8 Cage and Spring. Maximum Temperature of Liquid Pumped, 160°F (71°C).\*



THE GORMAN-RUPP COMPANY • MANSFIELD, OHIO

GORMAN-RUPP OF CANADA LIMITED • ST. THOMAS, ONTARIO, CANADA

www.grpumps.com

Specifications Subject to Change Without Notice

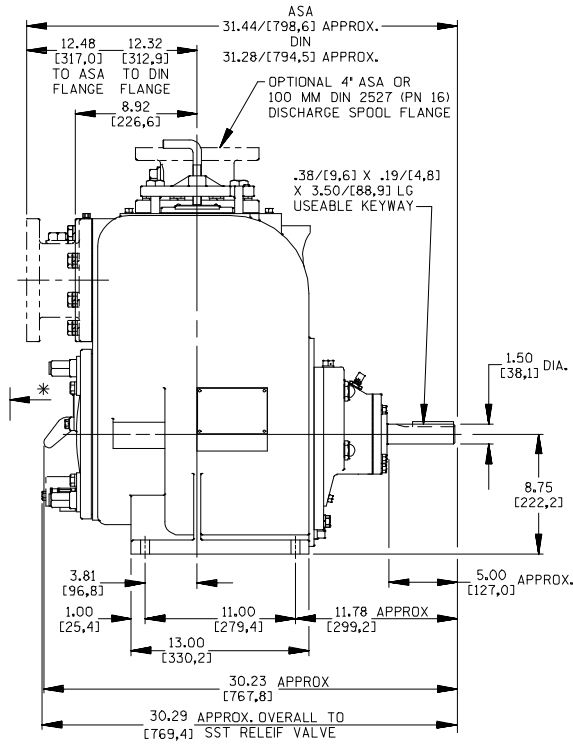
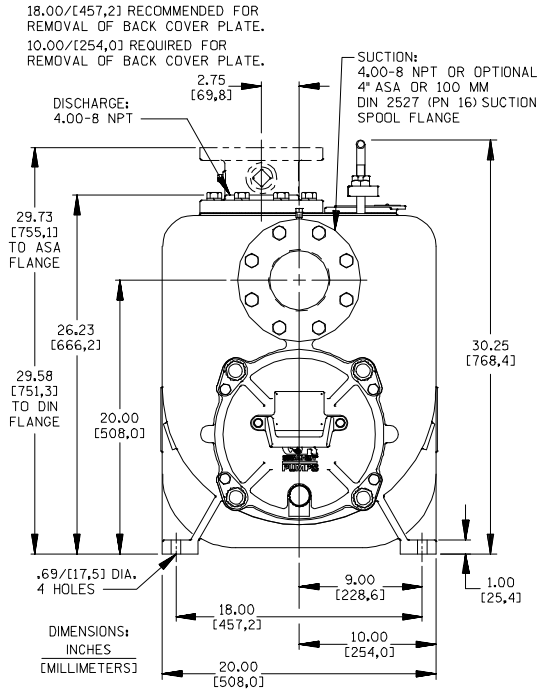
Printed in U.S.A.

# Specification Data

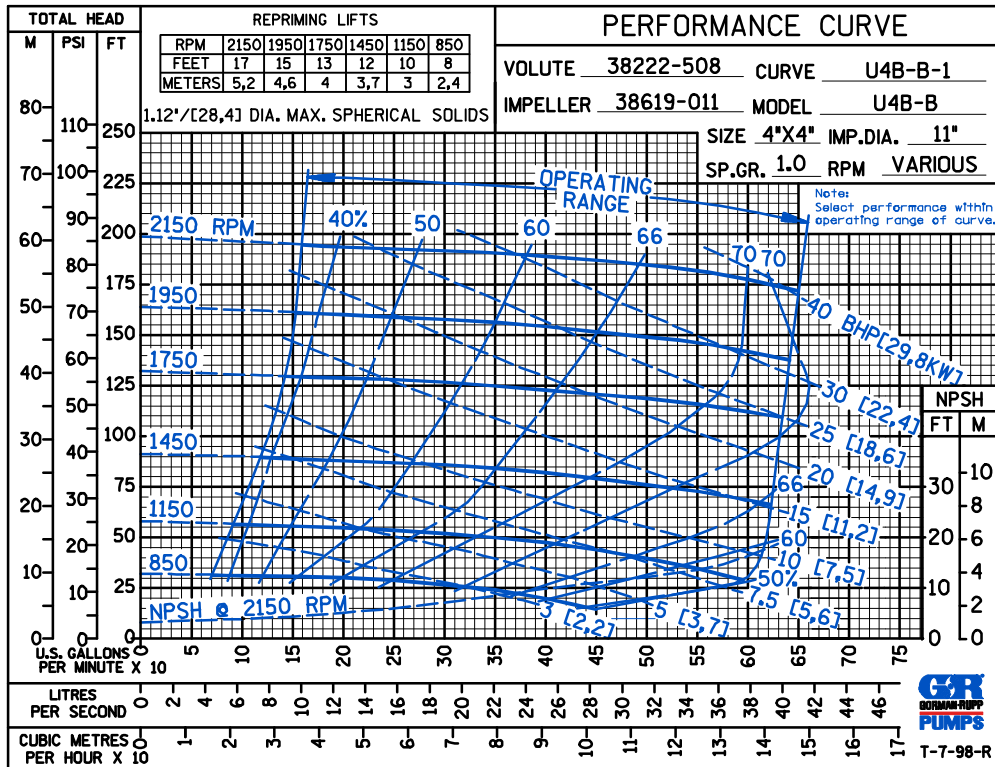
SECTION 50, PAGE 2820

APPROXIMATE DIMENSIONS and WEIGHTS

**NET WEIGHT:** 662 LBS. (300 KG.)  
**SHIPPING WEIGHT:** 700 LBS. (318 KG.)  
**EXPORT CRATE:** 18 CU. FT. (0,5 CU. M.)



**NOTE: OPTIONAL ASA OR DIN STANDARD SPOOL FLANGES AVAILABLE**



THE GORMAN-RUPP COMPANY • MANSFIELD, OHIO

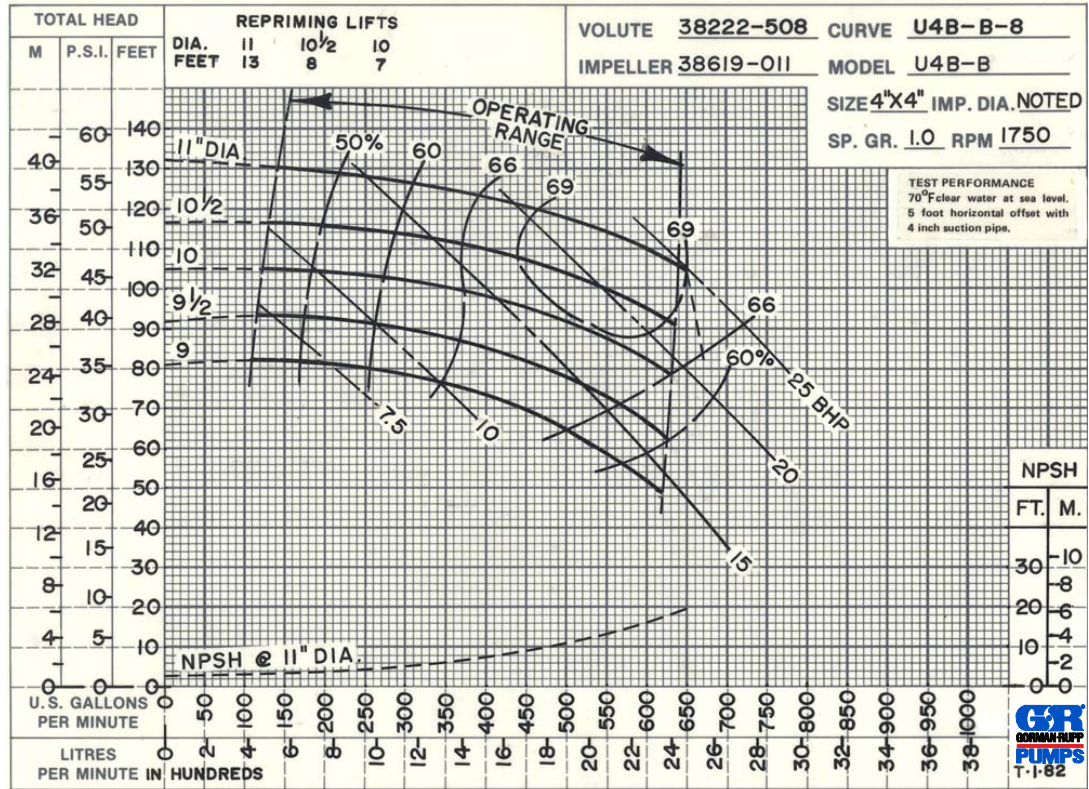
GORMAN-RUPP OF CANADA LIMITED • ST. THOMAS, ONTARIO, CANADA

Specifications Subject to Change Without Notice

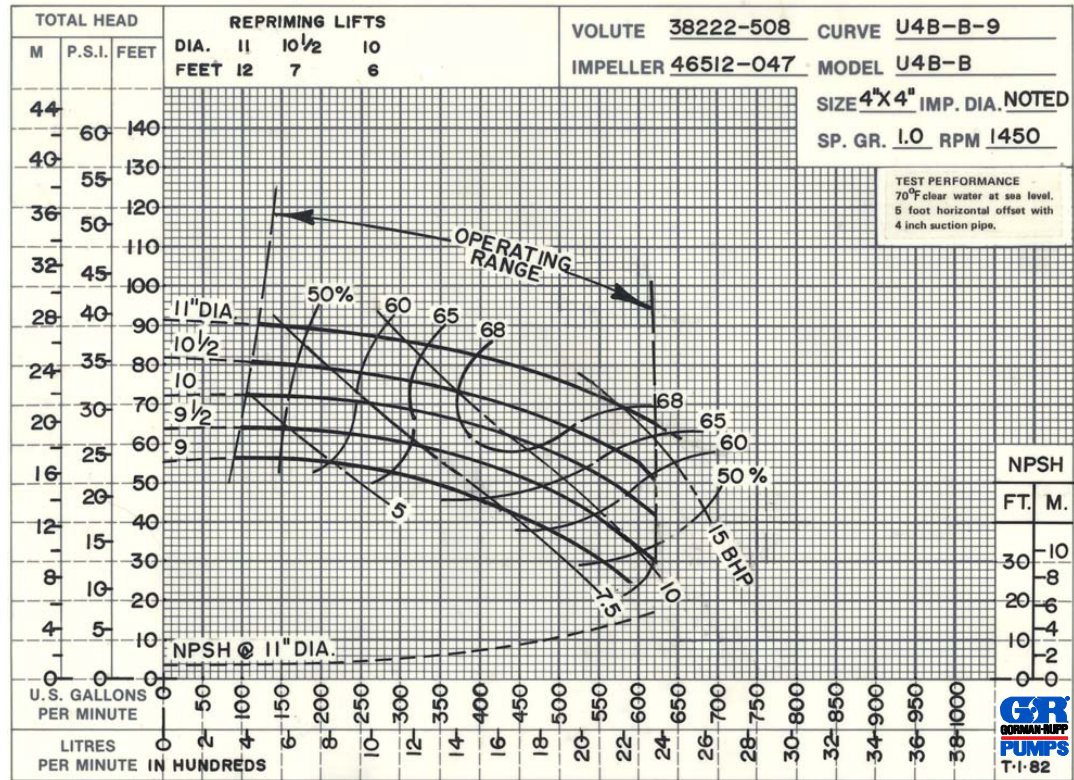
Printed in U.S.A.

CDS

PERFORMANCE  
BASED ON  
WATER



50 HERTZ  
PERFORMANCE  
BASED ON  
WATER



THE GORMAN-RUPP COMPANY • MANSFIELD, OHIO

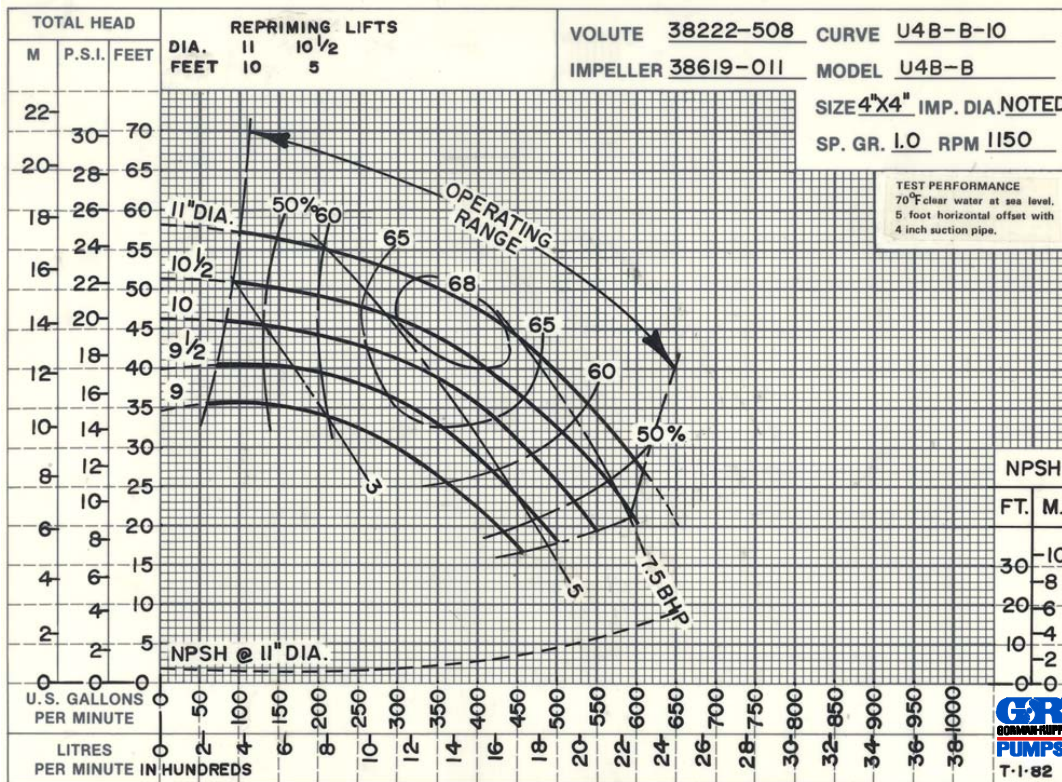
GORMAN-RUPP OF CANADA LIMITED • ST. THOMAS, ONTARIO, CANADA

Specifications Subject to Change Without Notice

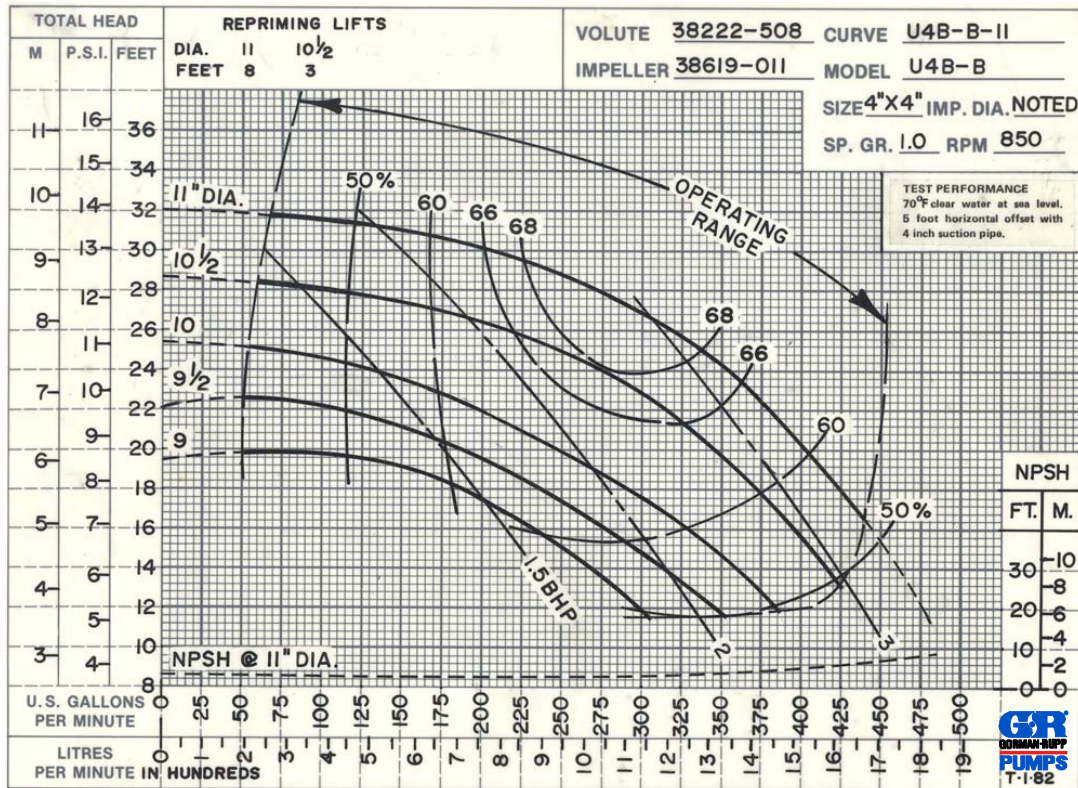
Printed in U.S.A.

CDS

PERFORMANCE  
BASED ON  
WATER



PERFORMANCE  
BASED ON  
WATER



THE GORMAN-RUPP COMPANY • MANSFIELD, OHIO

GORMAN-RUPP OF CANADA LIMITED • ST. THOMAS, ONTARIO, CANADA

Specifications Subject to Change Without Notice

Printed in U.S.A.